

REV	LOCATIONS	DESCRIPTION	DATE	REVISER	APPD
1	△	Size changes	22/JUL/21	KATE	CHERRY

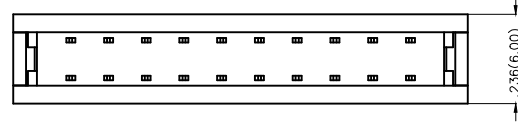
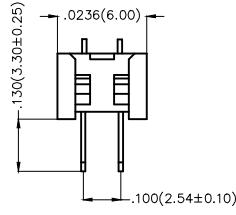
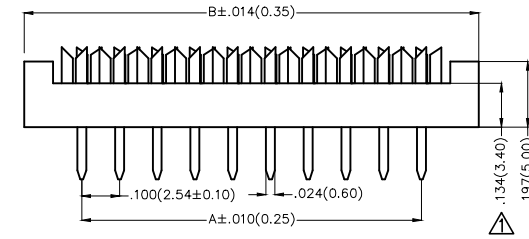
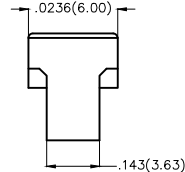
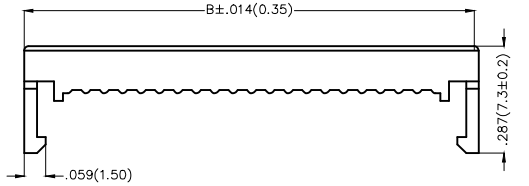
SPECIFICATIONS

Electrical

Current Rating: 2.0A AC(rms)/DC
 Voltage Rating: 250V AC(rms)/DC
 Contact Resistance: 20 mΩ Max
 Insulation Resistance: 1000 MΩ MIN
 Withstanding Voltage: 500V AC r.m.s
 Temperature Range—Operating: -40°C~+105°C

Material and Plating

Housing: PBT (UL94V-0)
 Contact: Brass
 Plating: Gold Plated/Gold in contact area,
 Tin on tail

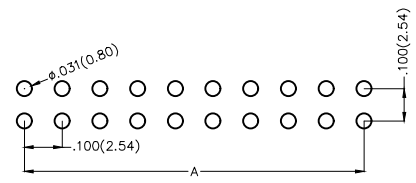


Ordering Information

FID 254 03 - XX X K6 K
 1 2 3 4 5 6 7

1 Category	2 Series Number	3 Distinction No.	4 Circuits	5 Plating	6 Color-Resin	7 Packaging
FID-IDC	254-Pitch2.54mm	03	XX	1-Gold plated 3-Gold in contact area, tin on tail	K6-Black	K-Tray

Circuits (n)	Part No.	Dimensions(in./mm)		Circuits (n)	Part No.	Dimensions(in./mm)	
		A	B			A	B
6	FID25403-06XK6K	.200(5.08)	.511(12.98)	26	FID25403-26XK6K	1.200(30.48)	1.511(38.38)
8	FID25403-08XK6K	.300(7.62)	.611(15.52)	30	FID25403-30XK6K	1.400(35.56)	1.711(43.46)
10	FID25403-10XK6K	.400(10.16)	.711(18.06)	34	FID25403-34XK6K	1.600(40.64)	1.911(48.54)
12	FID25403-12XK6K	.500(12.70)	.811(20.60)	36	FID25403-36XK6K	1.700(43.18)	2.011(51.08)
14	FID25403-14XK6K	.600(15.24)	.911(23.14)	40	FID25403-40XK6K	1.900(48.26)	2.211(56.16)
16	FID25403-16XK6K	.700(17.78)	1.011(25.68)	44	FID25403-44XK6K	2.100(53.34)	2.411(61.24)
18	FID25403-18XK6K	.800(20.32)	1.111(28.22)	50	FID25403-50XK6K	2.400(60.96)	2.711(68.86)
20	FID25403-20XK6K	.900(22.86)	1.211(30.76)	60	FID25403-60XK6K	2.900(73.66)	3.211(81.56)
24	FID25403-24XK6K	1.100(27.94)	1.411(35.84)	64	FID25403-64XK6K	3.100(78.74)	3.411(86.64)



Recommended P.C.Board Layout

<p>THIRD ANGLE PROJECTION</p>	GENERAL TOLERANCES (UNLESS SPECIFIED)		APPROVE BY	DATE	PART NO.	ITEM NO.	<p>Building Technology Cornerstone</p>
	X.±.012(0.30)	X.±5'	FRANK	9/SEPT/13	FID25403-XXXK6K	FID25403	
	X.X±.008(0.20)	.X'±2'	CHECKED BY	DATE	TITLE		
	X.XX±.006(0.15)	.XX'±1'	CHERRY	9/SEPT/13	Wire to Board(IDC Connector) Pitch 2.54mm		
SCALE	SIZE	X.XXX±.004(0.10)	.XXX'±0.5'	DRAWN BY	DATE	THIS DRAWING CONTAINS INFORMATION THAT IS PROPRIETARY TO TXGA INDUSTRIAL ELECTRONICS(S.Z)CO.,LTD AND SHOULD NOT BE USED WITHOUT WRITTEN PERMISSION	
5:1	A4			JACOB	9/SEPT/13	REV 1	SHEET NO. 1/1